



NPY5-R Polyclonal Antibody

Catalog No	YP-Ab-12779
Isotype	IgG
Reactivity	Human;Mouse;Rat
Applications	WB;IHC;IF;ELISA
Gene Name	NPY5R
Protein Name	Neuropeptide Y receptor type 5
Immunogen	The antiserum was produced against synthesized peptide derived from human NPY5R. AA range:221-270
Specificity	NPY5-R Polyclonal Antibody detects endogenous levels of NPY5-R protein.
Formulation	Liquid in PBS containing 50% glycerol, 0.5% BSA and 0.02% sodium azide.
Source	Polyclonal, Rabbit,IgG
Purification	The antibody was affinity-purified from rabbit antiserum by affinity-chromatography using epitope-specific immunogen.
Dilution	Western Blot: 1/500 - 1/2000. Immunohistochemistry: 1/100 - 1/300. Immunofluorescence: 1/200 - 1/1000. ELISA: 1/20000. Not yet tested in other applications.
Concentration	1 mg/ml
Purity	≥90%
Storage Stability	-20°C/1 year
Synonyms	NPY5R; NPYR5; Neuropeptide Y receptor type 5; NPY5-R; NPY-Y5 receptor; NPYY5-R; Y5 receptor
Observed Band	48kD
Cell Pathway	Cell membrane; Multi-pass membrane protein.
Tissue Specificity	Brain; hypothalamus.
Function	function:Receptor for neuropeptide Y and peptide YY. The activity of this receptor is mediated by G proteins that inhibit adenylate cyclase activity. Seems to be associated with food intake. Could be involved in feeding disorders.,similarity:Belongs to the G-protein coupled receptor 1 family.,tissue specificity:Brain; hypothalamus.,
Background	The protein encoded by this gene is a receptor for neuropeptide Y and peptide YY. The encoded protein appears to be involved in regulating food intake, with defects in this gene being associated with eating disorders. Also, the encoded protein is involved in a pathway that protects neuroblastoma cells from chemotherapy-induced cell death, providing a possible therapeutic target against neuroblastoma. Three transcript variants encoding the same protein have been found for this gene. [provided by RefSeq, Nov 2015],



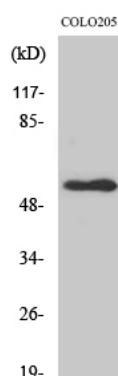
matters needing attention

Avoid repeated freezing and thawing!

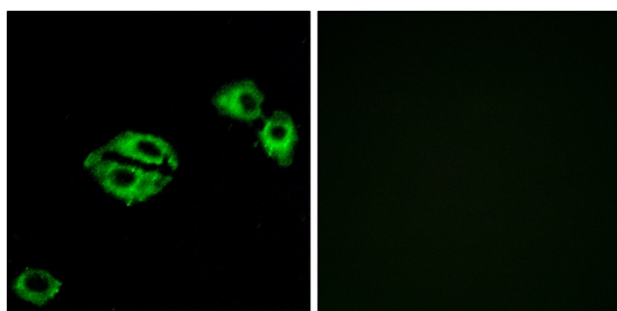
Usage suggestions

This product can be used in immunological reaction related experiments. For more information, please consult technical personnel.

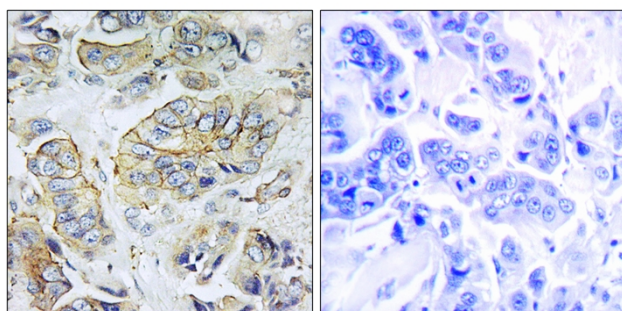
Products Images



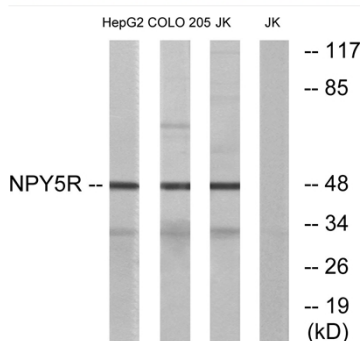
Western Blot analysis of various cells using NPY5-R Polyclonal Antibody



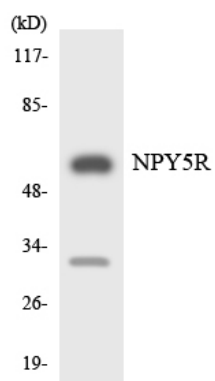
Immunofluorescence analysis of A549 cells, using NPY5R Antibody. The picture on the right is blocked with the synthesized peptide.



Immunohistochemistry analysis of paraffin-embedded human breast carcinoma tissue, using NPY5R Antibody. The picture on the right is blocked with the synthesized peptide.



Western blot analysis of lysates from COLO, Jurkat, and HepG2 cells, using NPY5R Antibody. The lane on the right is blocked with the synthesized peptide.



Western blot analysis of the lysates from Jurkat cells using NPY5R antibody.